

COX CONSTRUCTION AND PROPERTIES

LAND & COMMERCIAL REAL ESTATE ADVISORS



Land for sale ±200 Acres

I-795 and Ash St Ext. Goldsboro, NC

Asking Price	\$1,420,000 Willing to sell single tract or subdivide
Zoning	R-16 and HB (Highway Business)
Proposed Use	Highway Business, Industrial, General Business
Parcel No.	2599492556, 2599492873, 2599475678, 2599260524
Utilities	Water and Sewer Available

Located at one of the most traveled intersections in Wayne County, this property is adjacent to Cherry Hospital Medical Center and the new Mount Olive Pickle Plant.

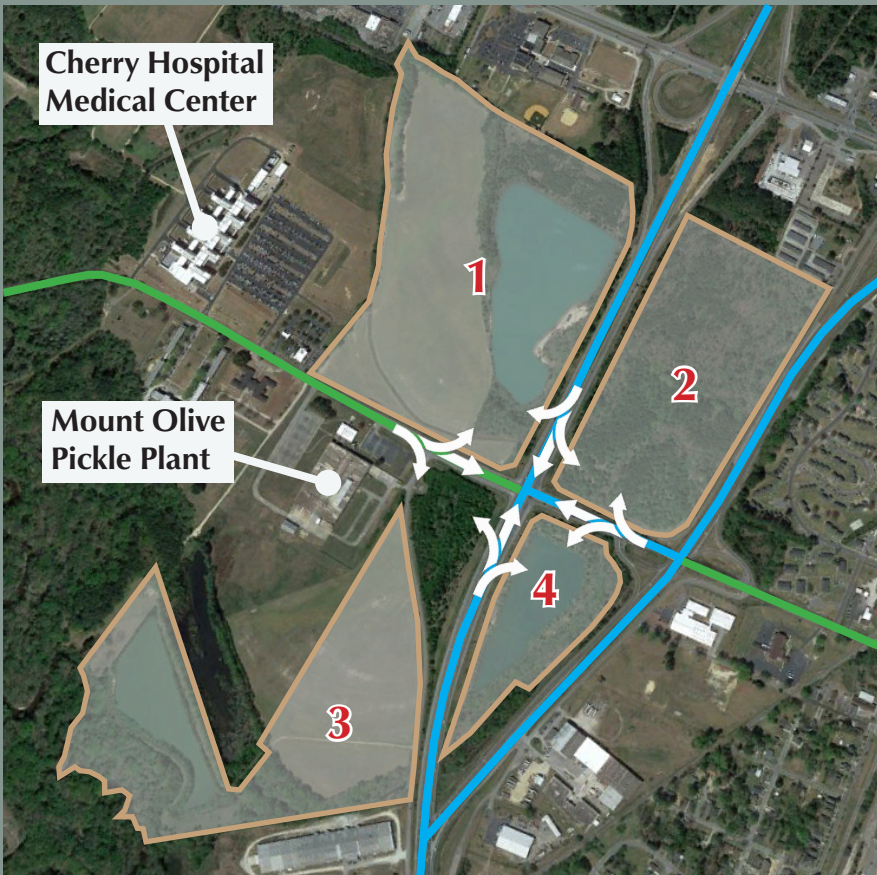
For more information contact:

Chris Cox, CCIM
(919) 738 - 9574

www.coxproperty.com

COX CONSTRUCTION AND PROPERTIES

LAND & COMMERCIAL REAL ESTATE ADVISORS



TRACT 1
±87 Acres

TRACT 2
±49 Acres

TRACT 3
±50 Acres

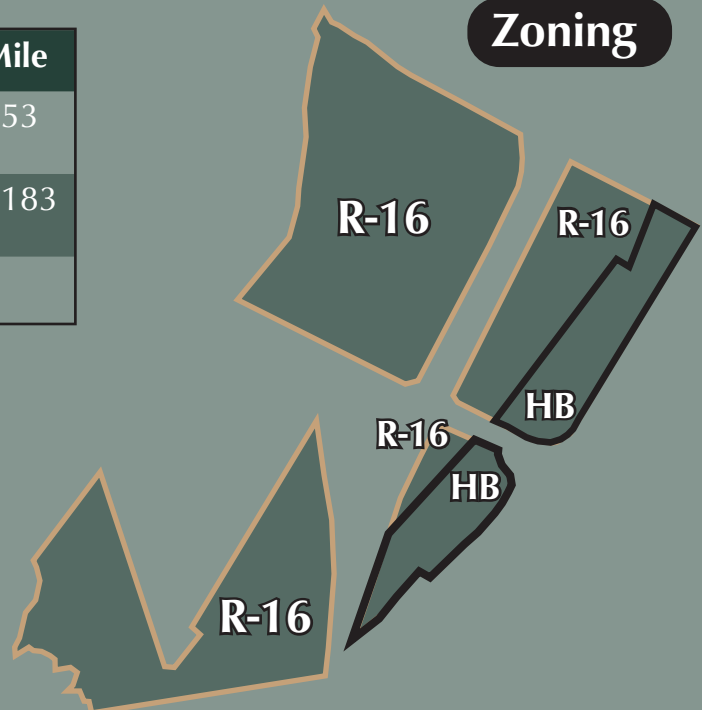
TRACT 4
±18 Acres

NCDOT Daily Traffic Count

- 5,000 - 9,999
- 10,000 - 19,999

	2-Mile	5-Mile	10-Mile
Population	8,179	42,748	91,653
Median Household Income	\$29,596	\$42,325	\$46,183
Median Age	39.5	36.5	36.5

Zoning



For more information contact:

Chris Cox, CCIM
(919) 738 - 9574
www.coxproperty.com

DISCLAIMER: No warranty or representation, express or implied, is made to the accuracy of the information contained herein, and same is submitted subject to errors, omissions, change of price, rental or other conditions, withdrawal without notice, and to any special listing conditions imposed by principals.